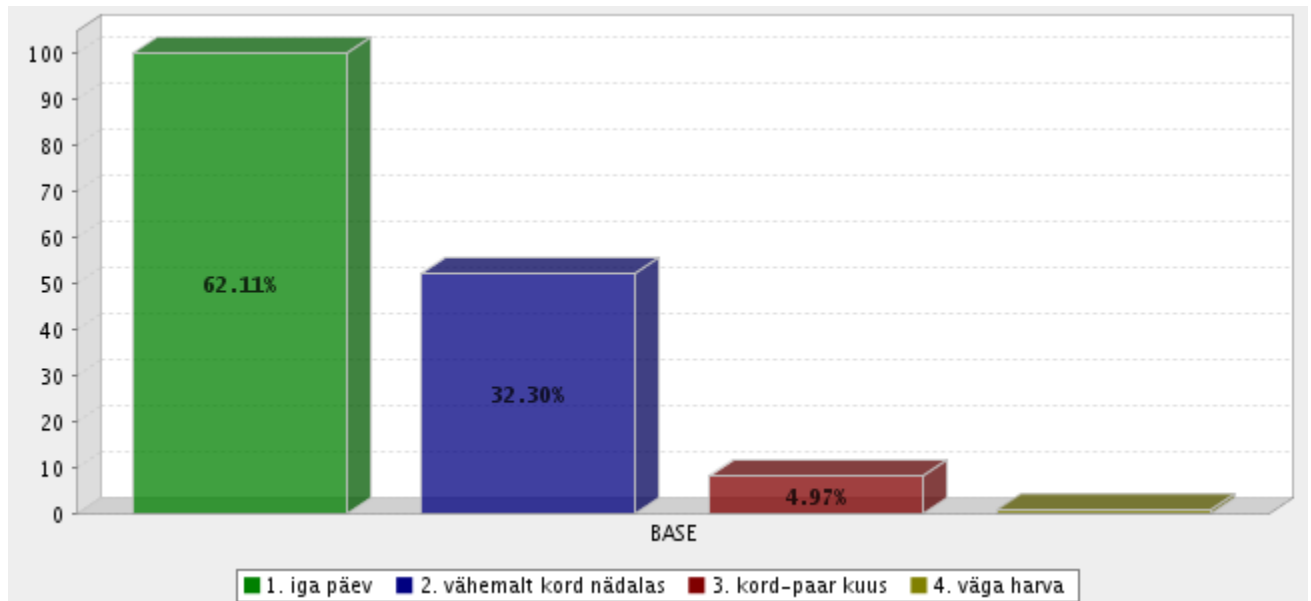
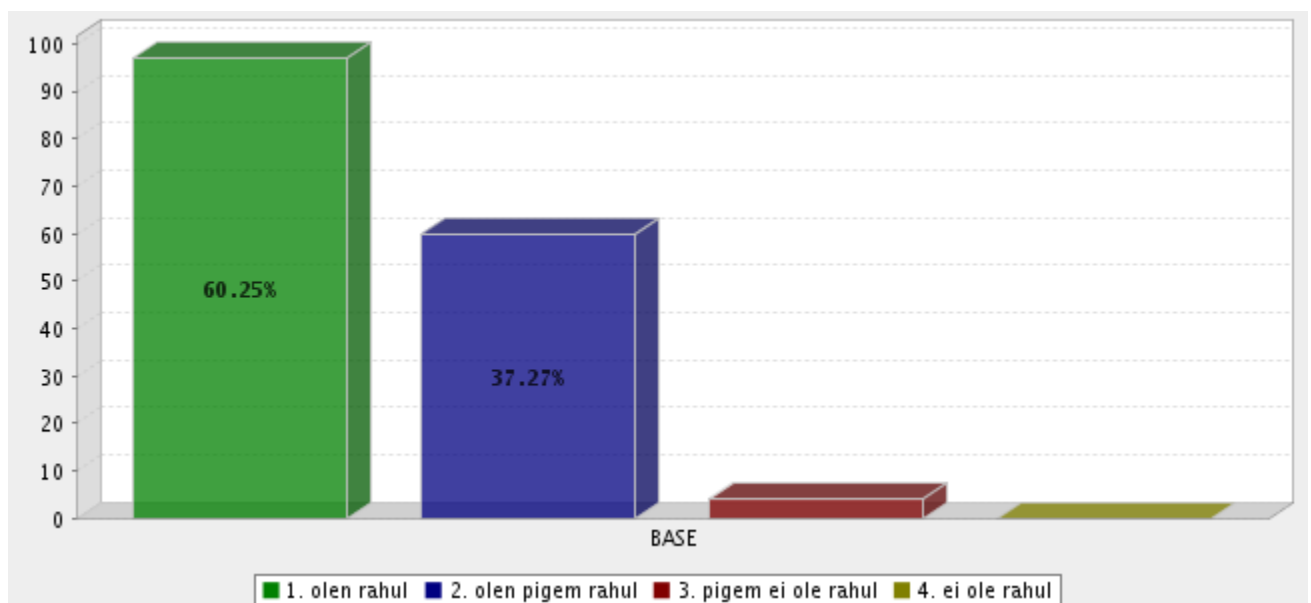


eRT kasutajate rahulolu küsitlus 2012

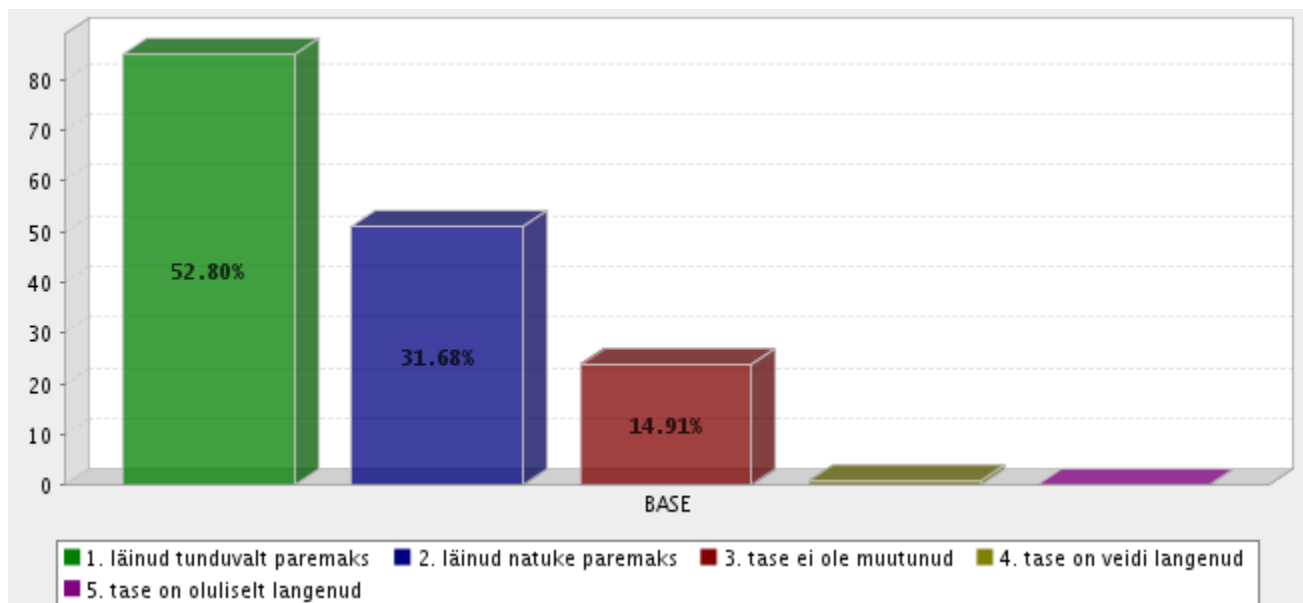
1. Kas Te kasutate Riigi Teataja võrguväljaannet (edaspidi RT)?



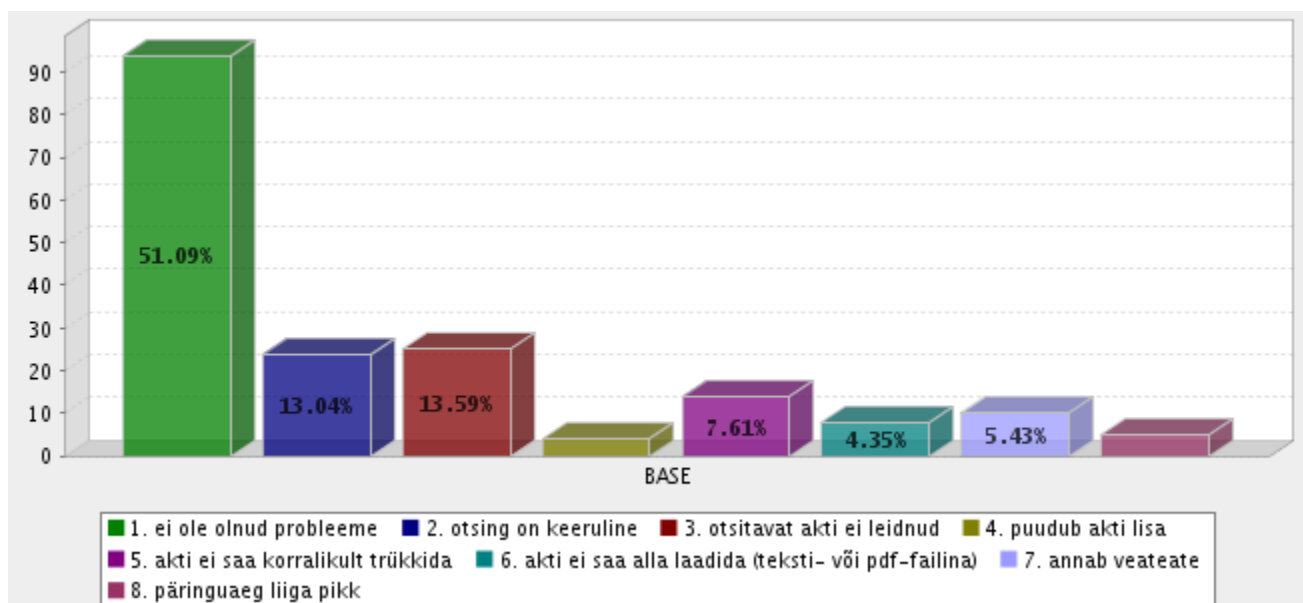
2. Kas olete rahul RT-ga?



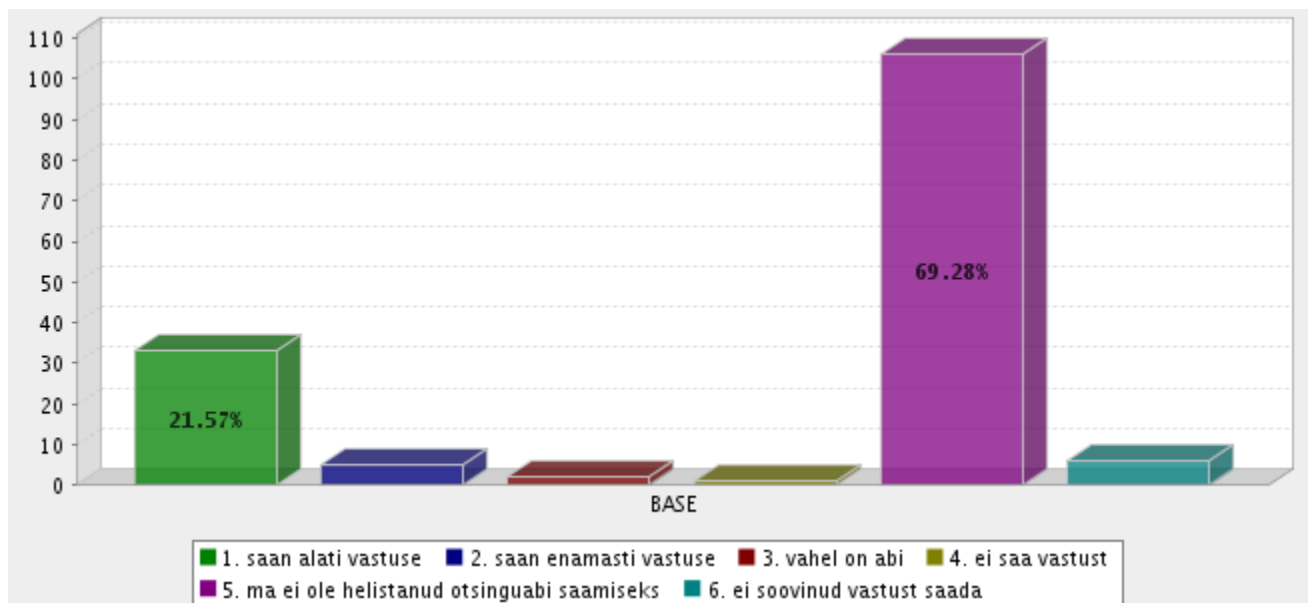
5. Kas RT võrguväljaanne on viimase aasta jooksul Teie arvates:



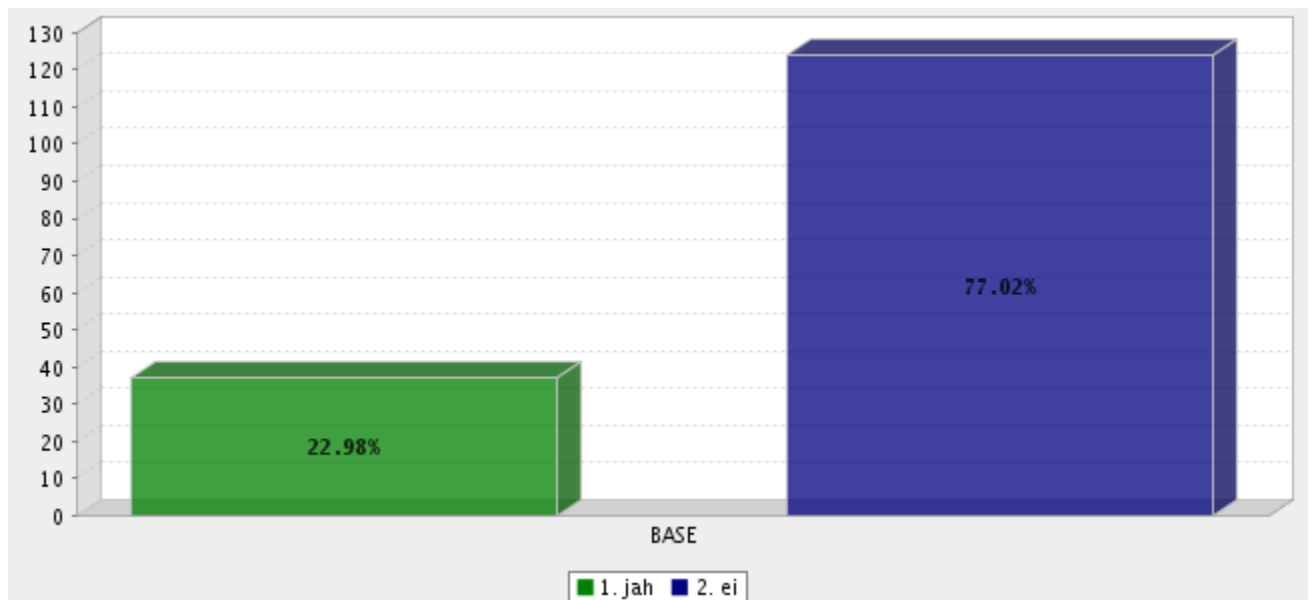
6. Kas ja missuguseid probleeme on Teil olnud RT kasutamisel?



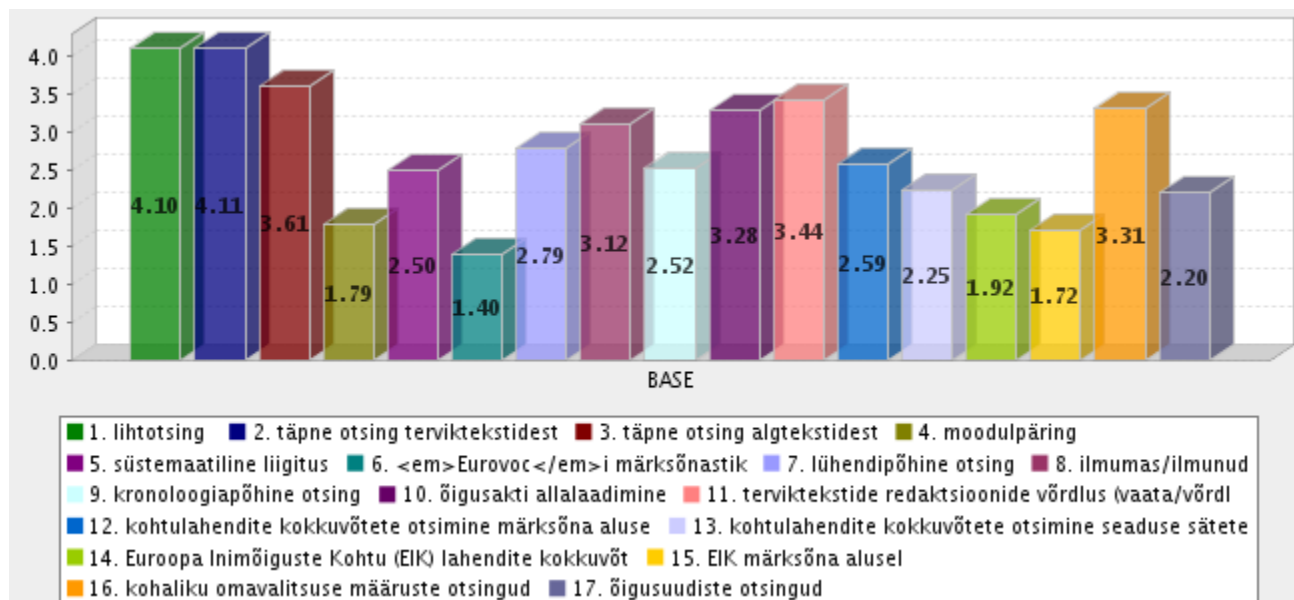
7. Otsinguabi telefonile helistades ja tagasiside e-kirjale:



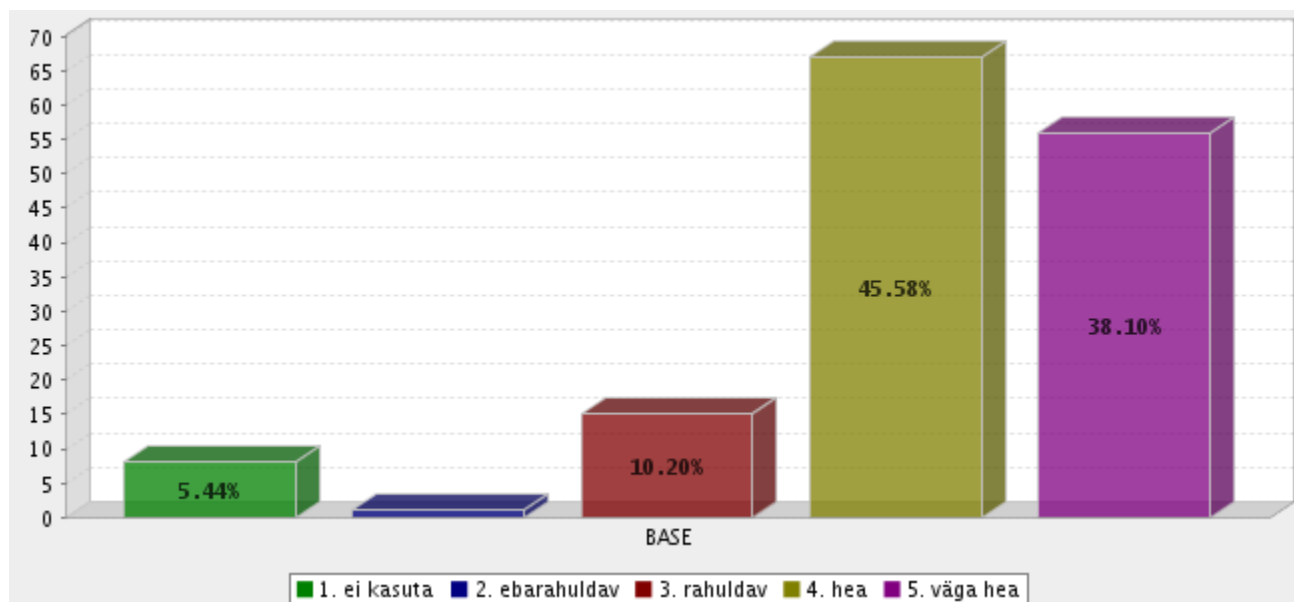
8. Kas kasutate Minu Riigi Teataja teenust ja tellite uusi õigusakte ja teavet e-posti aadressile?



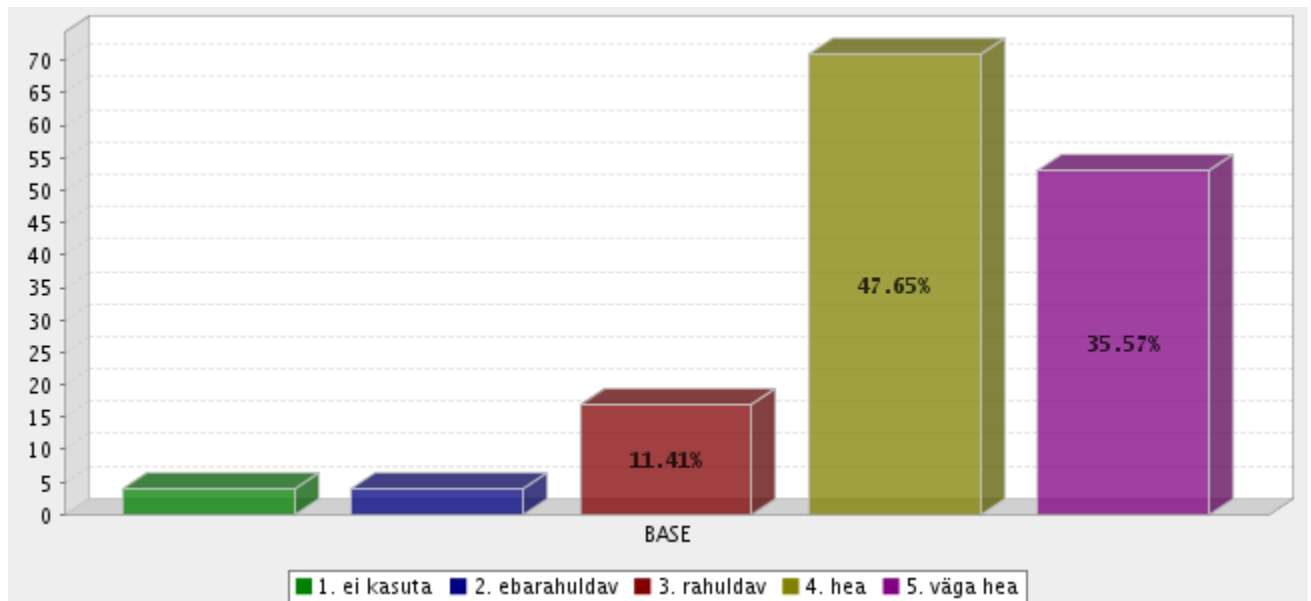
9. Hinnake RT võimalusi, mida olete kasutanud. Otsinguid hinnake otsingutulemuste alusel:



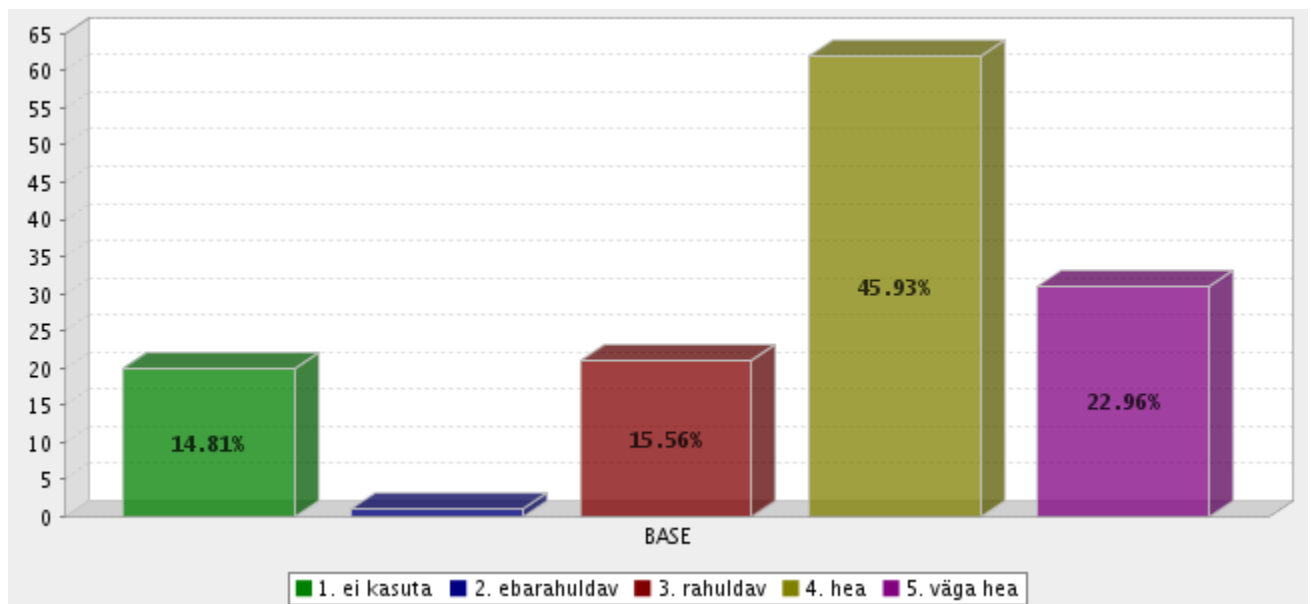
lihtotsing



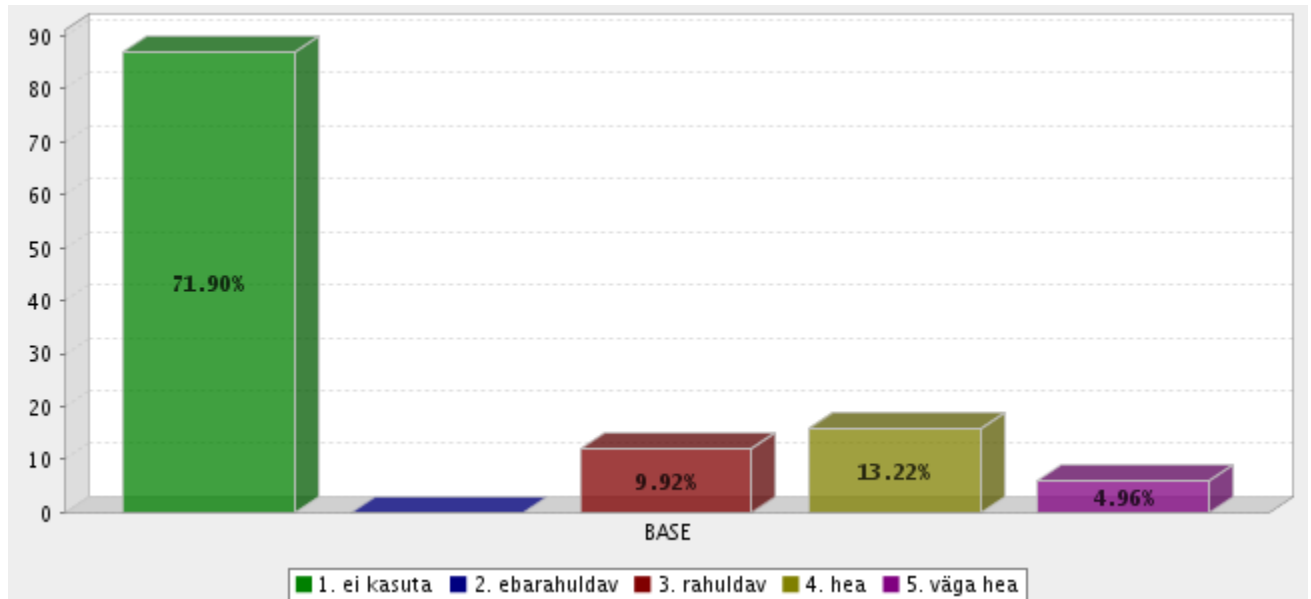
täpne otsing terviktekstidest



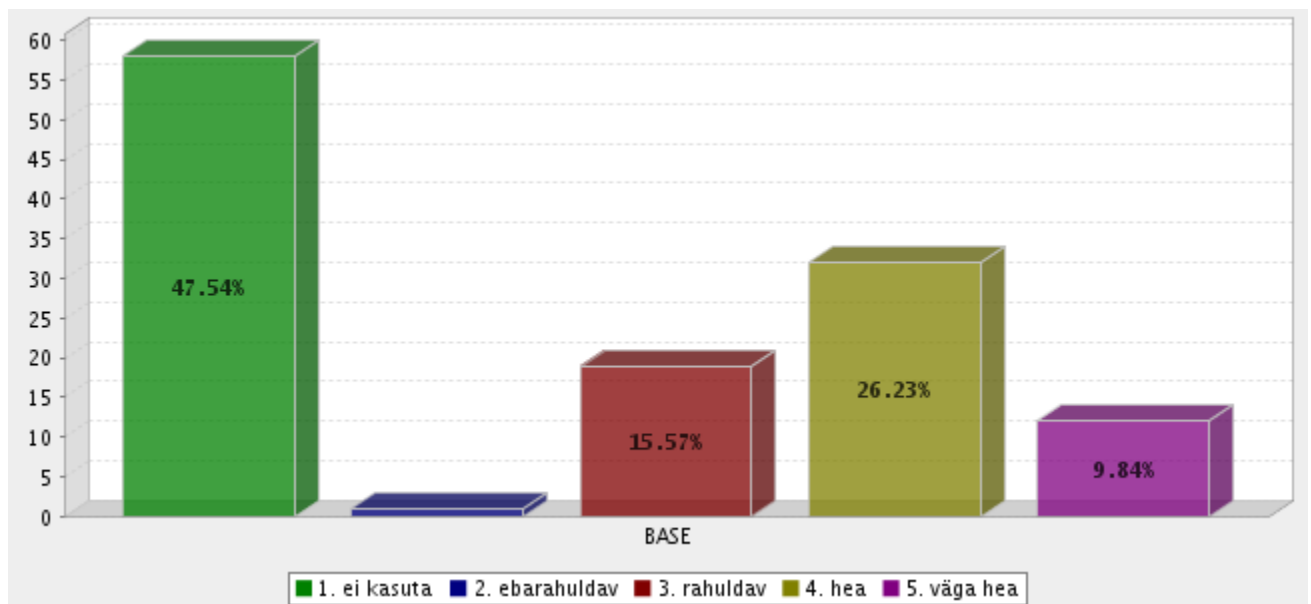
täpne otsing algtekstidest



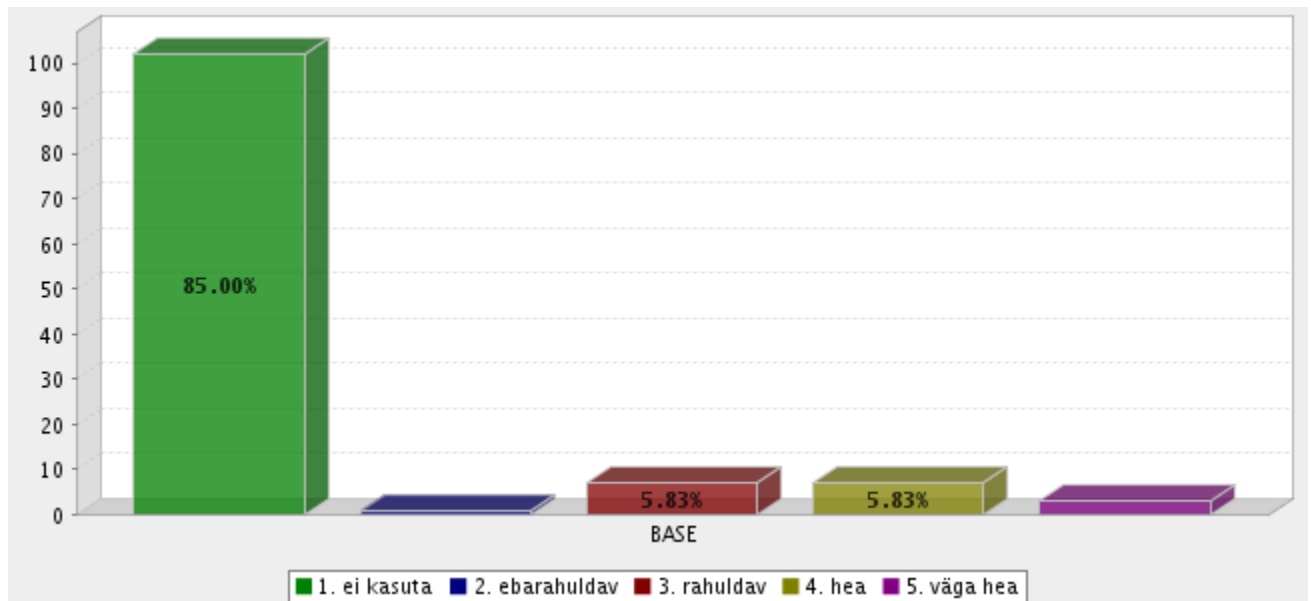
moodulpäring



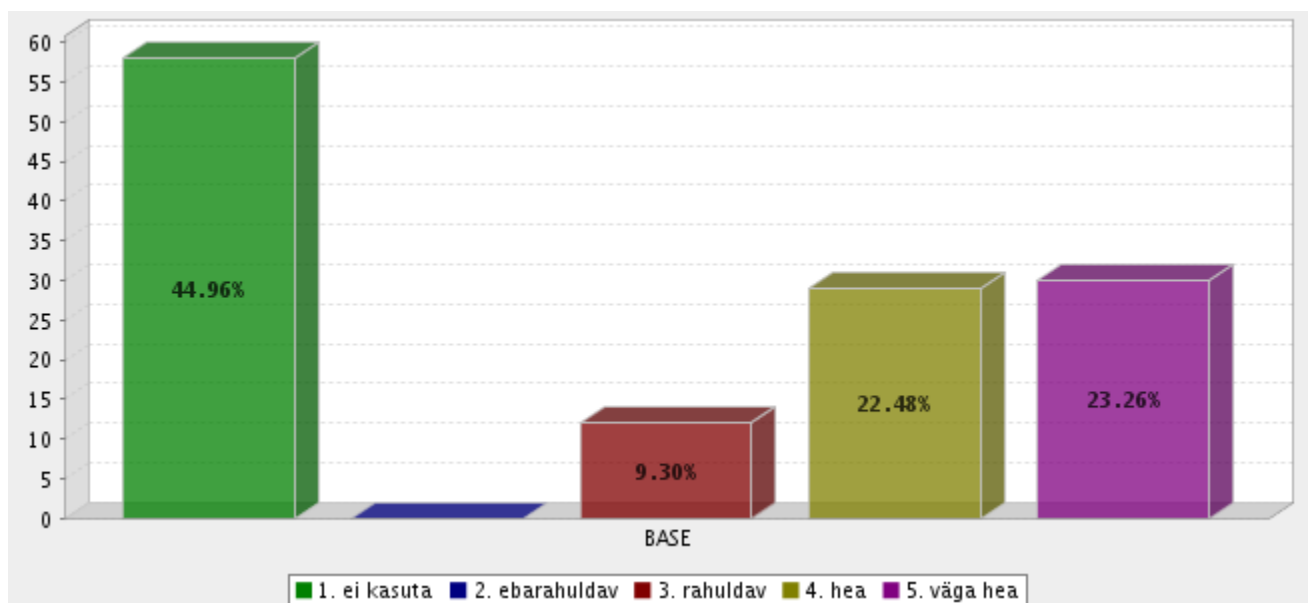
süsteemiline liigitus



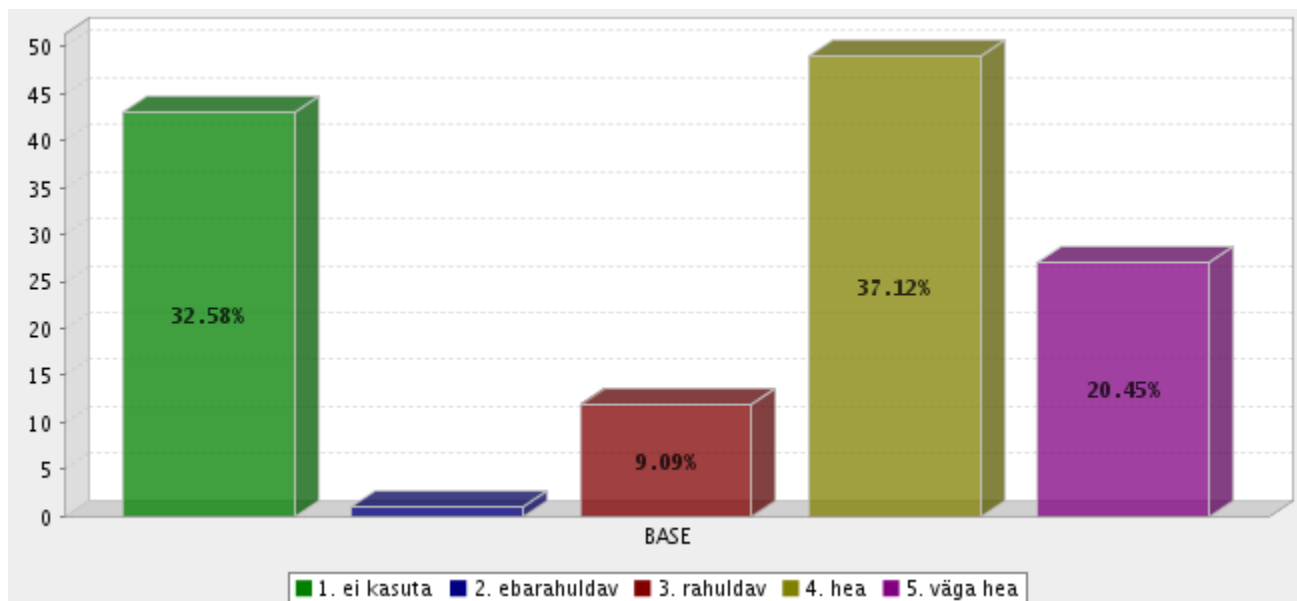
Eurovoci märksõnastik



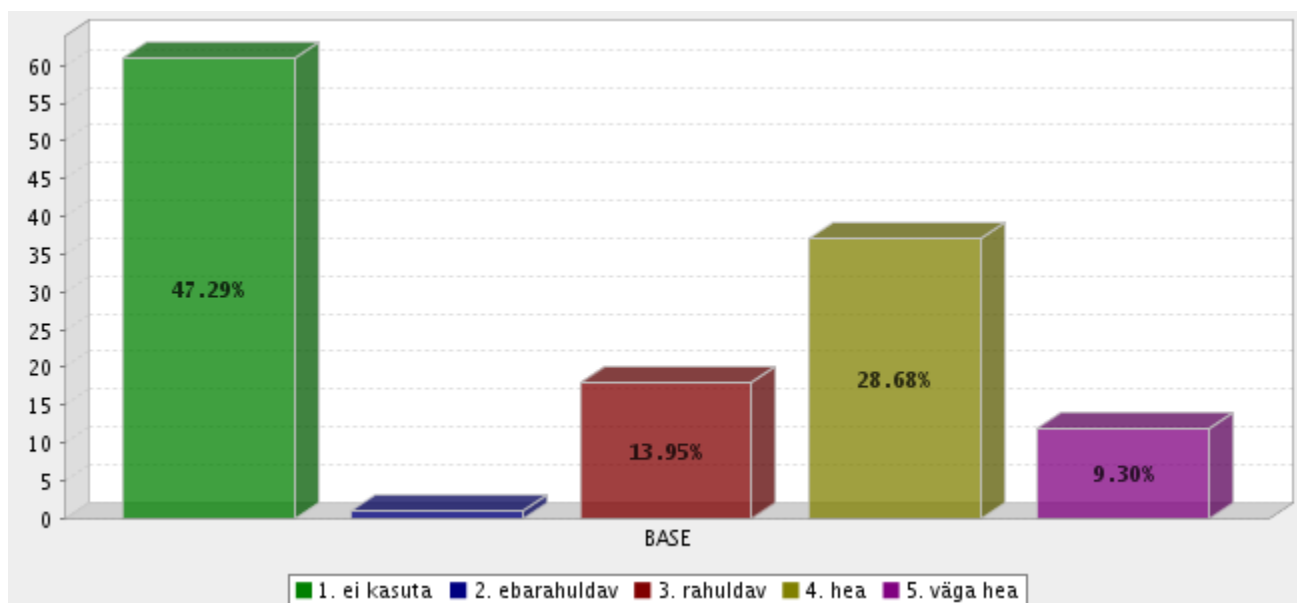
lühendipõhine otsing



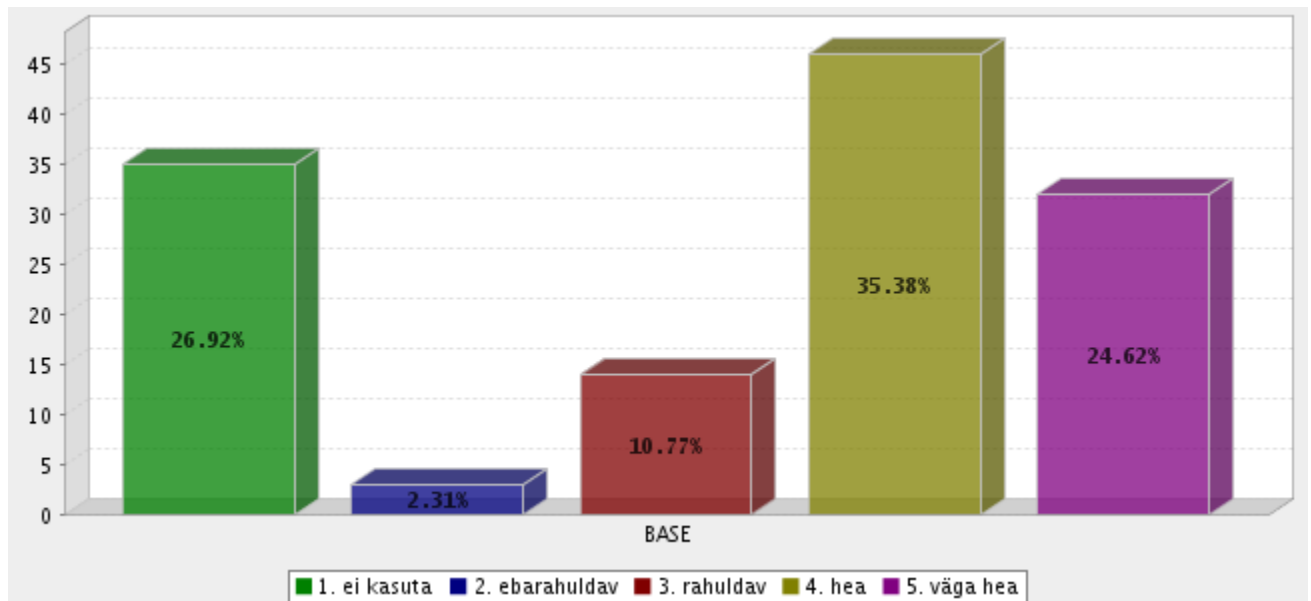
ilmumas/ilmunud



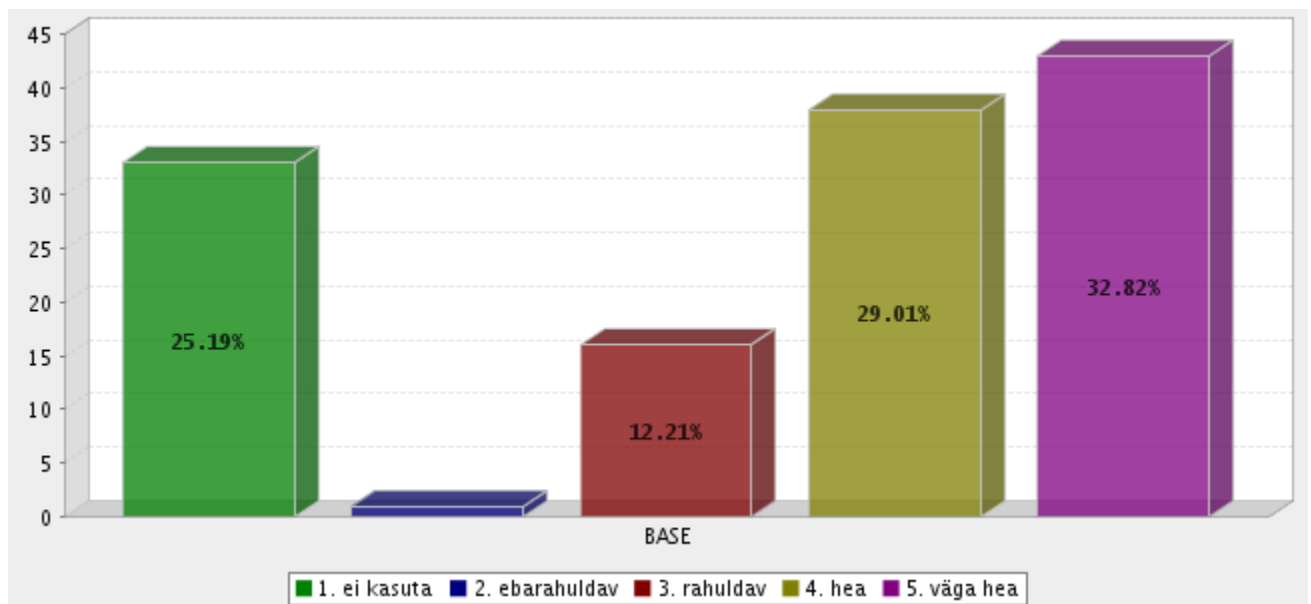
kronoloogiapõhine otsing



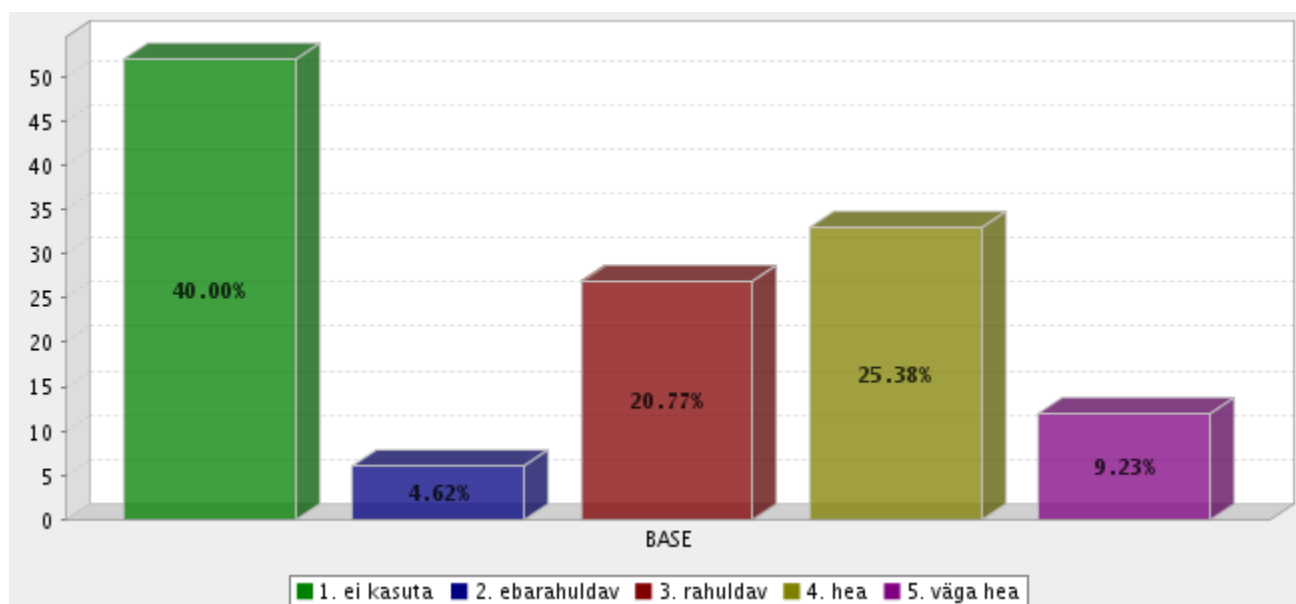
õigusakti allalaadimine



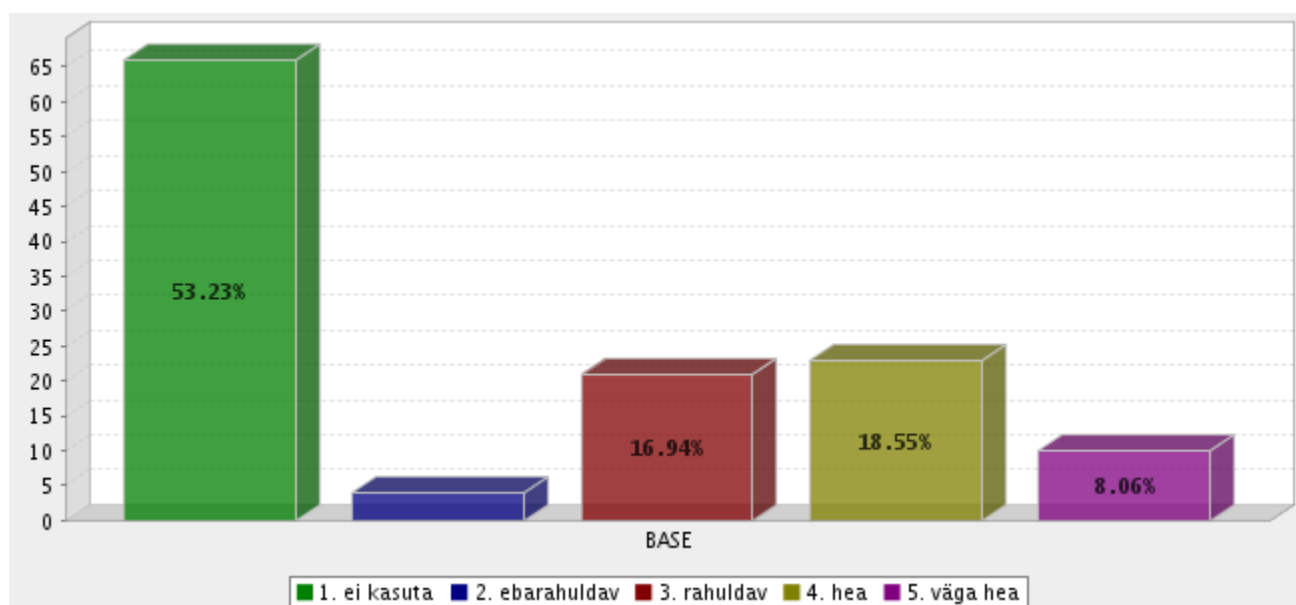
terviktekstide redaktsioonide võrdlus (vaata/võrdle)



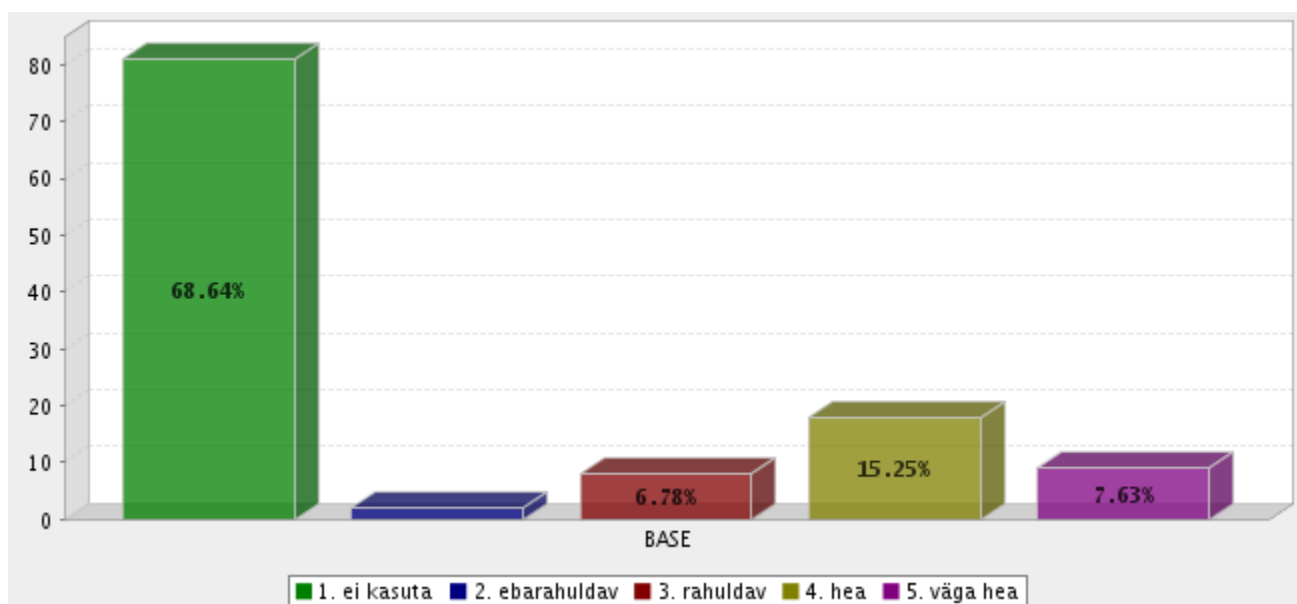
kohtulahendite kokkuvõtete otsimine märksõna alusel



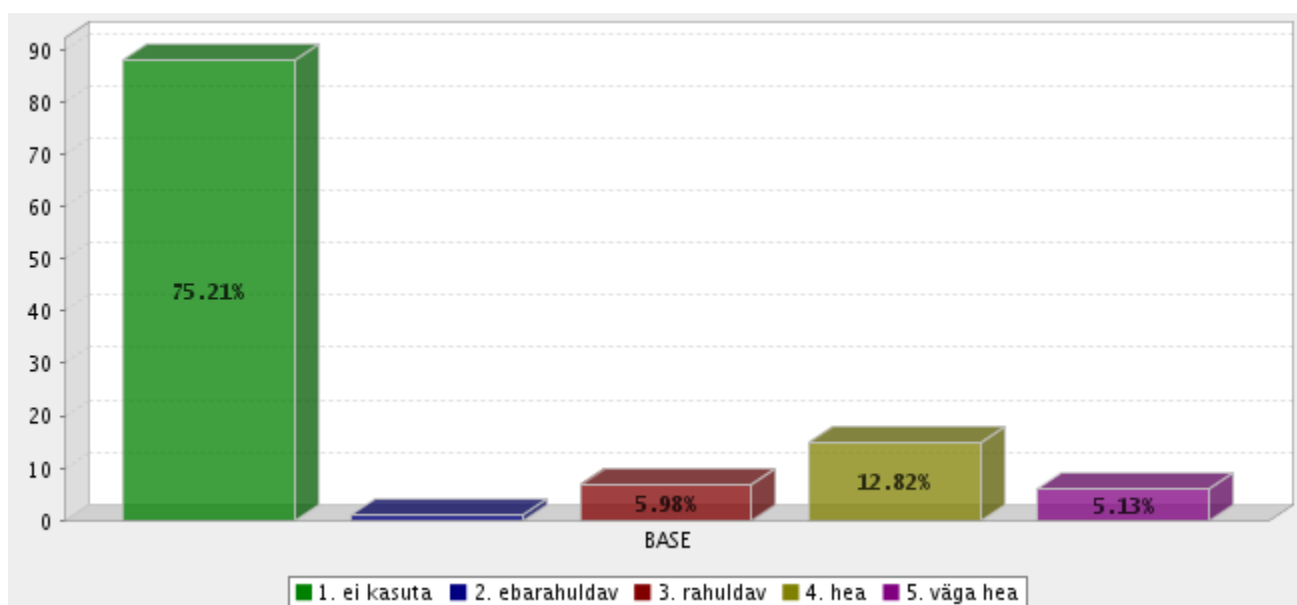
kohtulahendite kokkuvõtete otsimine seaduse sätete alusel



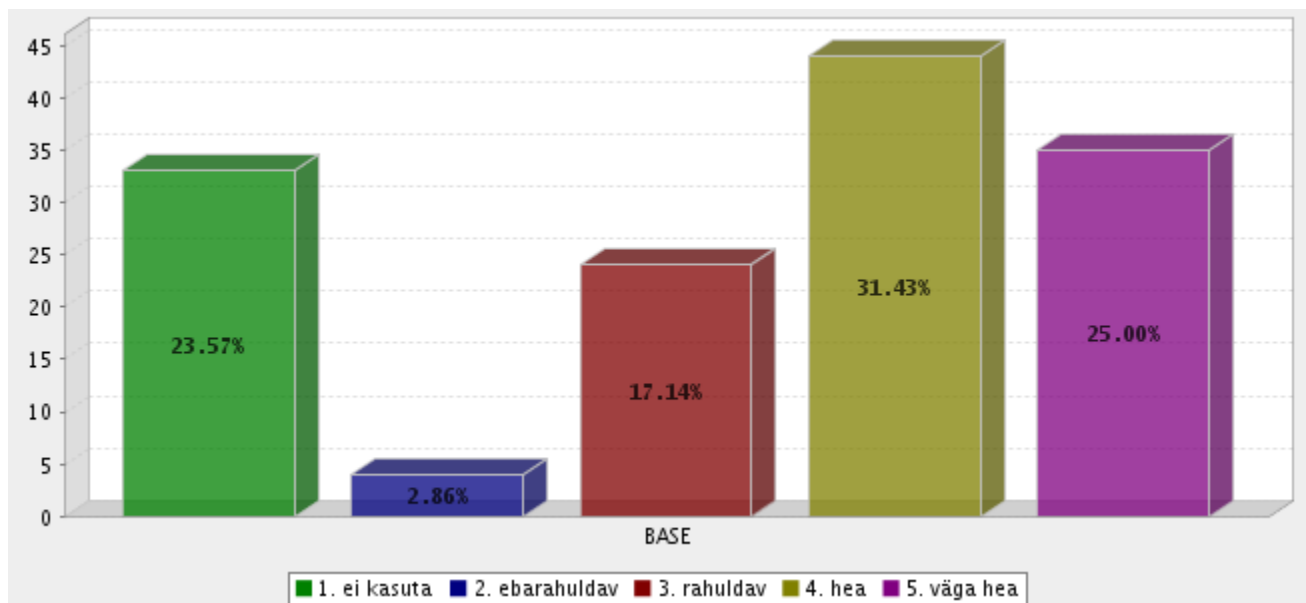
Euroopa Inimõiguste Kohtu (EIK) lahendite kokkuvõtete otsing



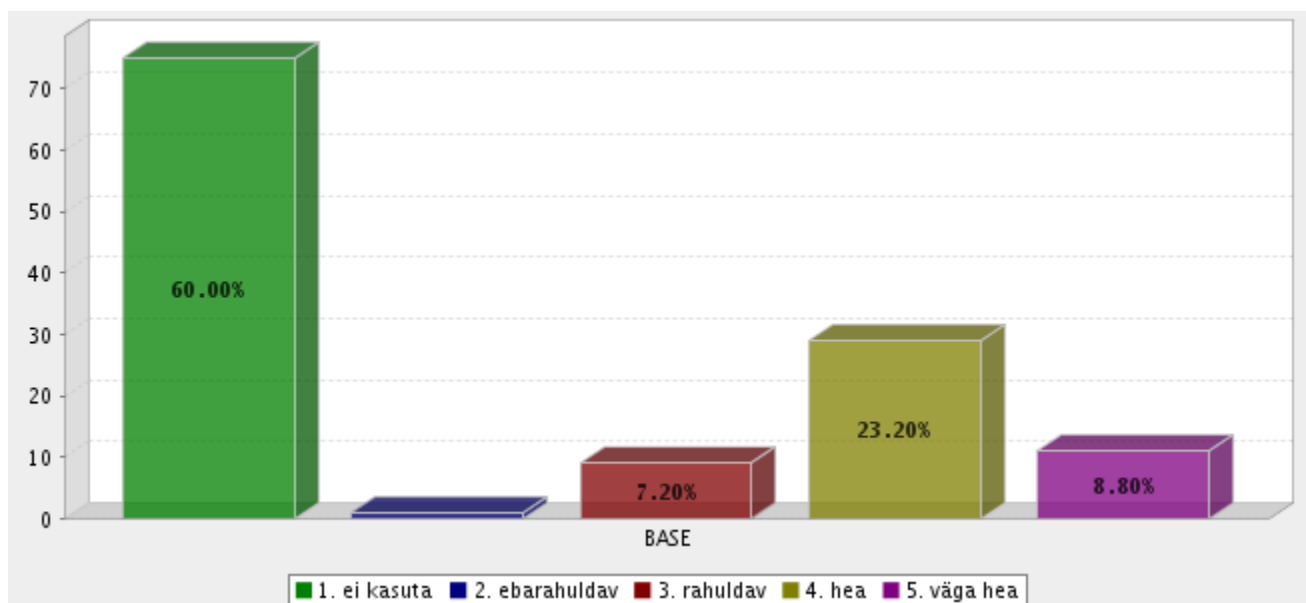
EIK märksõna alusel



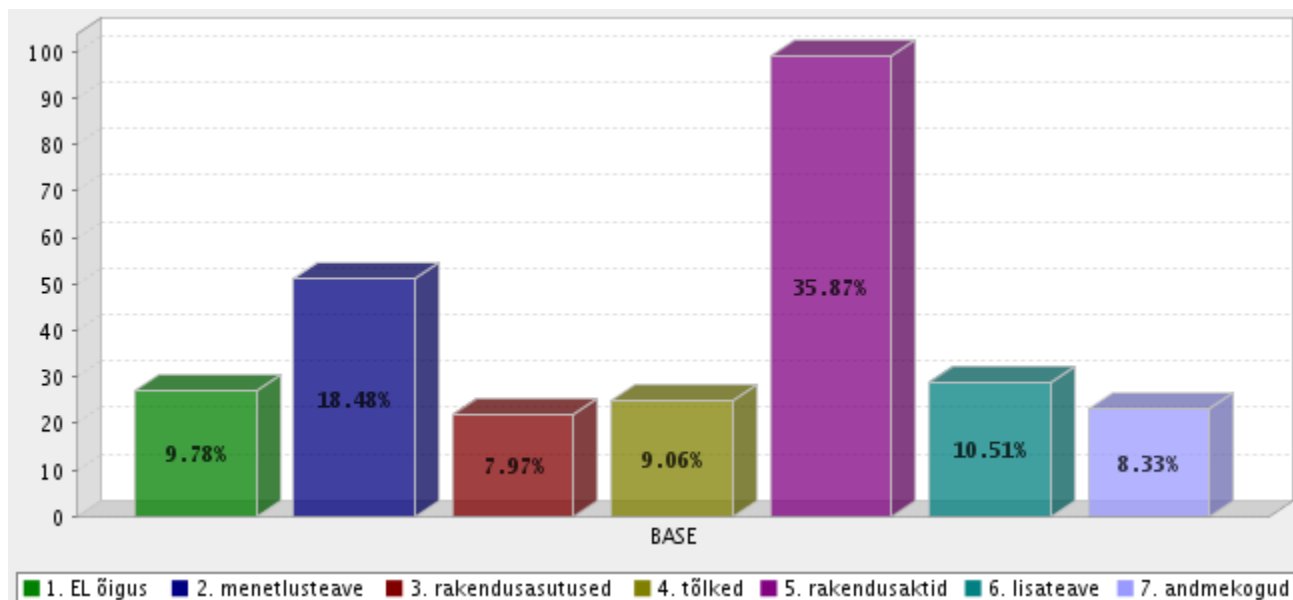
kohaliku omavalitsuse määruste otsingud



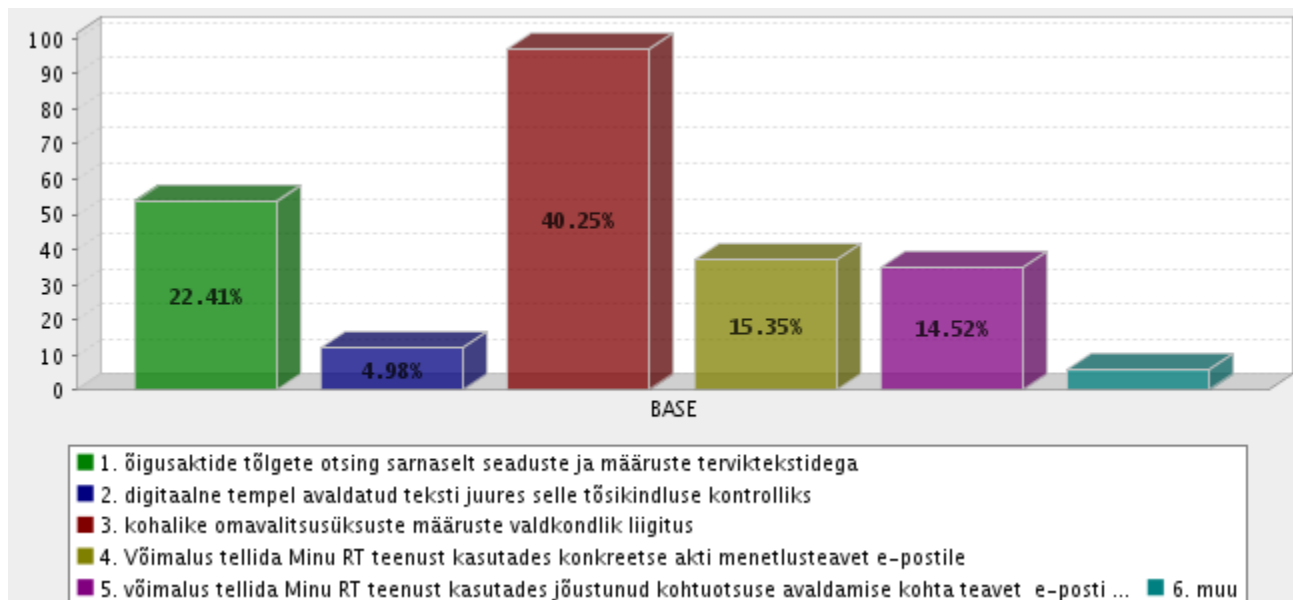
õigusuudiste otsingud



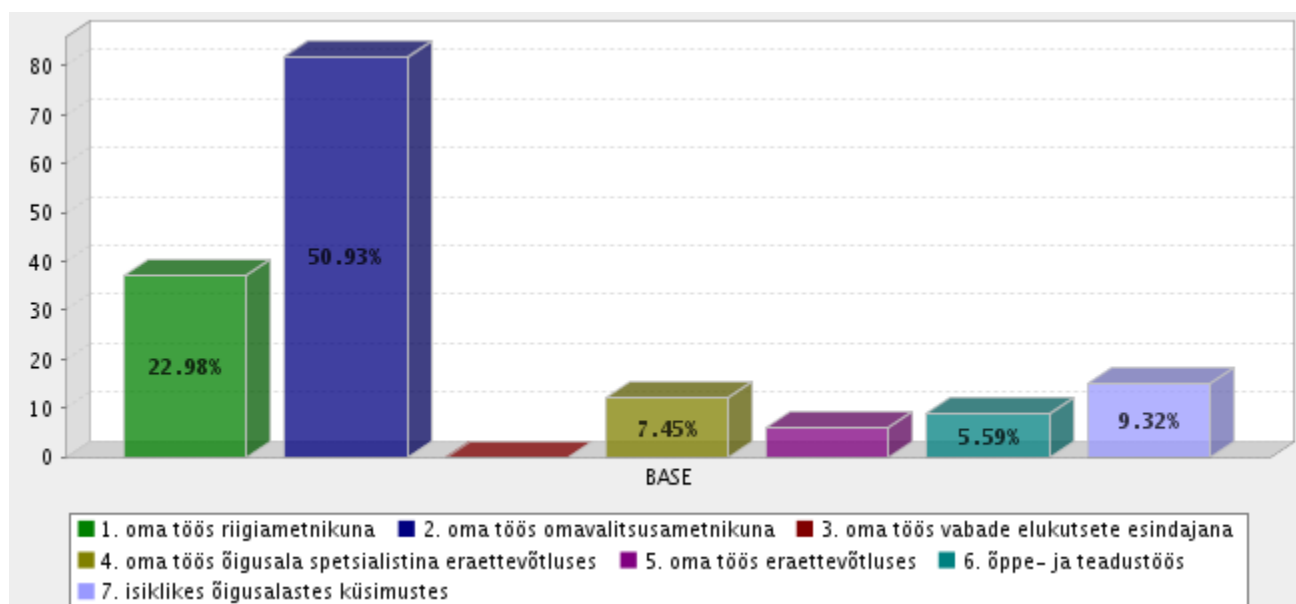
10. Kas ja millist õigusakti juures olevat lisateavet (seoseid) kasutate?



11. Milliseid uusi võimalusi võiks veel RTs olla?



12. Milleks Te RT-d enamasti kasutate?



13. Kas Teie või Teie asutuse töötajad vajaks täiendavat RT kasutamise alast juhendamist/koolitust?

Koolitussoov edastage palun e-posti aadressil ert@riigiteataja.ee

